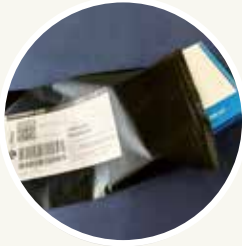


How to Return Your Genetic Test kit

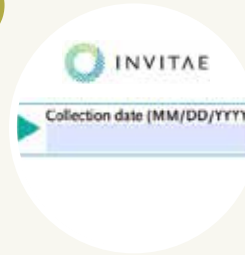
1



Your genetic test kit will arrive by courier

Opening the envelope you will find the genetic test kit box along with a courier envelope for returning sample.

5



Complete the test requisition form

On the form write:
Collection date: MM / DD / YYYY

Your details on the tube must must exactly match those on the test requisition form

2

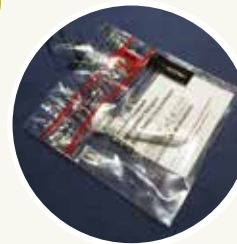


Inside the genetic test kit box is the ORAGENE DNA collection kit.

Underneath the collection kit you will locate:

- How to provide a saliva sample
- Specimen bag
- Your Test Requisition Form

6



Place the tube in the specimen bag and seal.

To seal, peel the minigrip strip expose the adhesive

3



Collecting saliva sample

- Follow the instructions provided on the **"How to provide a saliva sample"**

7



Place the specimen bag into the genetic test kit box.

Then place the genetic test kit box into the return envelope provided

4



Preparing saliva sample for transport to invitae

On the tube we have placed a label with

- Your name
- NHI
- Date of Birth

On the label please complete the collection date: MM / DD / YYYY

Note: In step 6, you will be asked to add this date to the requisition form

8



Arrange collection of your kit

Please email us at **ask@familycancer.co.nz** with the following:

- address of where the collection kit needs to be picked up from
- Location eg. Front door
- Any special instructions

And we will take care of this for you.